



VISION

Semester Two 2005 - Issue Two

➤ Wednesday 26th October 2005



Craig Anthony

A Life by Design!

Craig Anthony is a young, dynamic and successful peak performance coach. He is also a businessman, investor, motivational speaker, actor, singer and athlete. He specialises in personal, business and corporate development training and applies cutting edge tools and strategies to increase peoples' profit and personal success.

Craig's interest in people resulted in his pursuit for psychology and science based programs to facilitate people and companies in achieving their optimal effectiveness and performance. He has a wide ranging and expanding clientele that includes coaching and consulting with industry leaders, senior management, athletes and celebrities.

In our final event of the year The Breakfast Club invites you to **A Life by Design** - a chance to sample Craig Anthony's unique approach to performance solutions and to develop one for yourself.

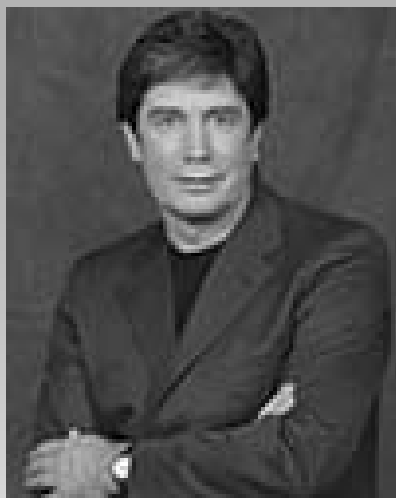
Breakfast served **6.45am**

Wellesley Campus Conference Centre

A Block (below AUT Library)

a big thank you to our sponsors...





Derek McCormack - Vice-Chancellor AUT

➤ Wednesday 12th April 2006

Derek became Vice-Chancellor on April 2nd 2004. Prior to this role he was the Deputy Vice-Chancellor Administration and held positions including General Manager, Corporate Services Director, and Associate Director Academic.

In his role he is committed to building and enhancing AUT as a university that is committed to quality teaching and real world learning in an environment conducive to innovation and creativity.

A charismatic speaker who will give you the answers you need - If you want to know what AUT's future is and how it's going to affect you then this event is a must to see!

Mark Weldon- Chief Executive, New Zealand Stock Exchange (NZX)

Mark is the Chief Executive of NZX, and works to implement the Board's strategies. Mark is also a director of Smartshares and Chairman of Link Market Services Limited.

" New Zealand's markets can be developed further to serve the natural talent of New Zealand's entrepreneurs, unlocking value for more New Zealand company owners through access to competitive capital sources, and New Zealand investors through a diverse trading marketplace".

If you want to know what makes NZX unique, where it's going in the future and how this knowledge can benefit you come along!



Prepay Top Up

**NOW AVAILABLE @
The Breakfast Club!**

Check thebreakfastclub.org.nz for office hours

1. Minimum top up transaction \$20
2. Eftpos or Cash payment only
(Sorry – Credit Card or Cheque payment not accepted)
3. Vodafone 021 Prepay standard terms & conditions apply

Semester One 2006...

» Wednesday 14th April 2006

Derek McCormack- AUT Vice Chancellor

» To be advised

Mark Walden- CEO of The New Zealand Stock Exchange (NZX)

contact us

Please direct any correspondence or feedback to:

breakfastclub@aut.ac.nz

Phone: (09) 921 9999 Ext 5379

Facsimile: (09) 921 9976

thebreakfastclub.org.nz